

KU

**2024
Campus
Master Plan**

Master Plan Presentation

November 16-17, 2023

Agenda

- 1. Goal**
- 2. Strategic Drivers**
- 3. Framework Plan**

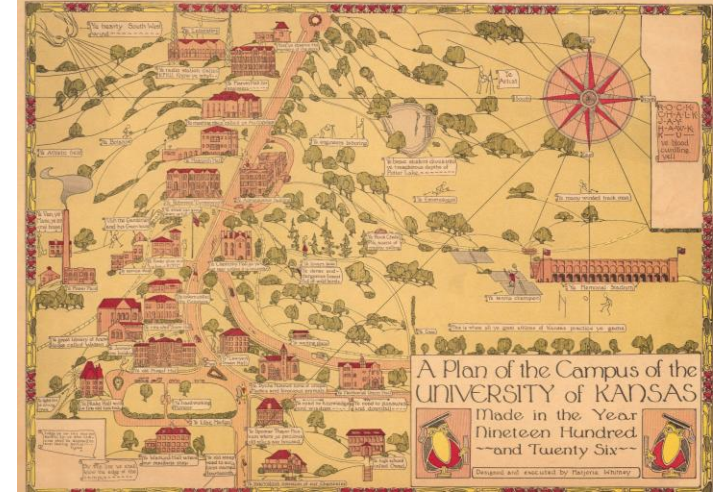


An aerial photograph of a university campus. The image shows several large, multi-story buildings with red roofs and light-colored facades. There are many trees scattered throughout the campus, and a road with a few cars is visible. The sky is overcast with grey clouds. The text is overlaid on the top left of the image.

Our Shared Aspiration

To become a **RESILIENT** institution
that is **SUSTAINABLE** for the benefit
of future generations.

Beauty and Legacy of Place



STRATEGIC PLAN

“To be an exceptional learning community that lifts each other and advances society”.
Jayhawks Rising



STUDENT SUCCESS



**HEALTHY & VIBRANT
COMMUNITIES**



RESEARCH & DISCOVERY

Equity Driven Engagements

5000+
KU Members Engaged



1 LISTENING

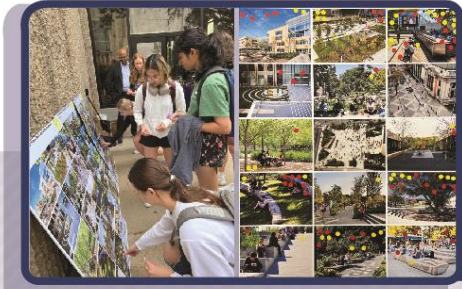


- 550+ 1:1 Interviews
- 60+ Group Interviews
- Group Meetings With Students



2 CO-CREATING

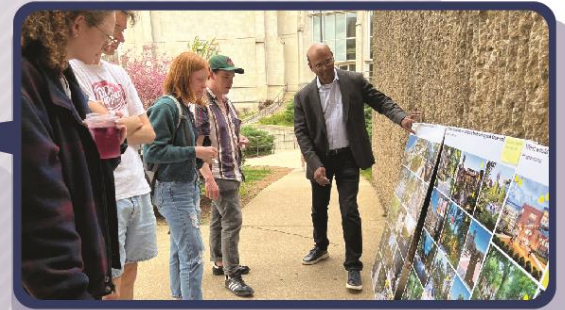
- 200+ Participatory Workshops
- 2 Design Charrettes
- 2 Campus wide Town halls



4 SYNTHESIZE

PART I: CURRENT STATE
What are the key opportunities for improving DEIB on campus today?

What are the current state of DEIB on campus today?	What are the current state of DEIB on campus today?	What are the current state of DEIB on campus today?	What are the current state of DEIB on campus today?
What are the current state of DEIB on campus today?	What are the current state of DEIB on campus today?	What are the current state of DEIB on campus today?	What are the current state of DEIB on campus today?



CONSENSUS

- 3700+ online survey responses
- Future of KU Series Online Survey
- Map Based Survey Meeting KU, KUIP & KUAE



IMPACT

Focus resources on mission critical goals



ENGAGEMENT

Prioritize investments in fostering a sense of community



STEWARDSHIP

Build a culture of stewardship to guide every action

Impact

Strategic Plan

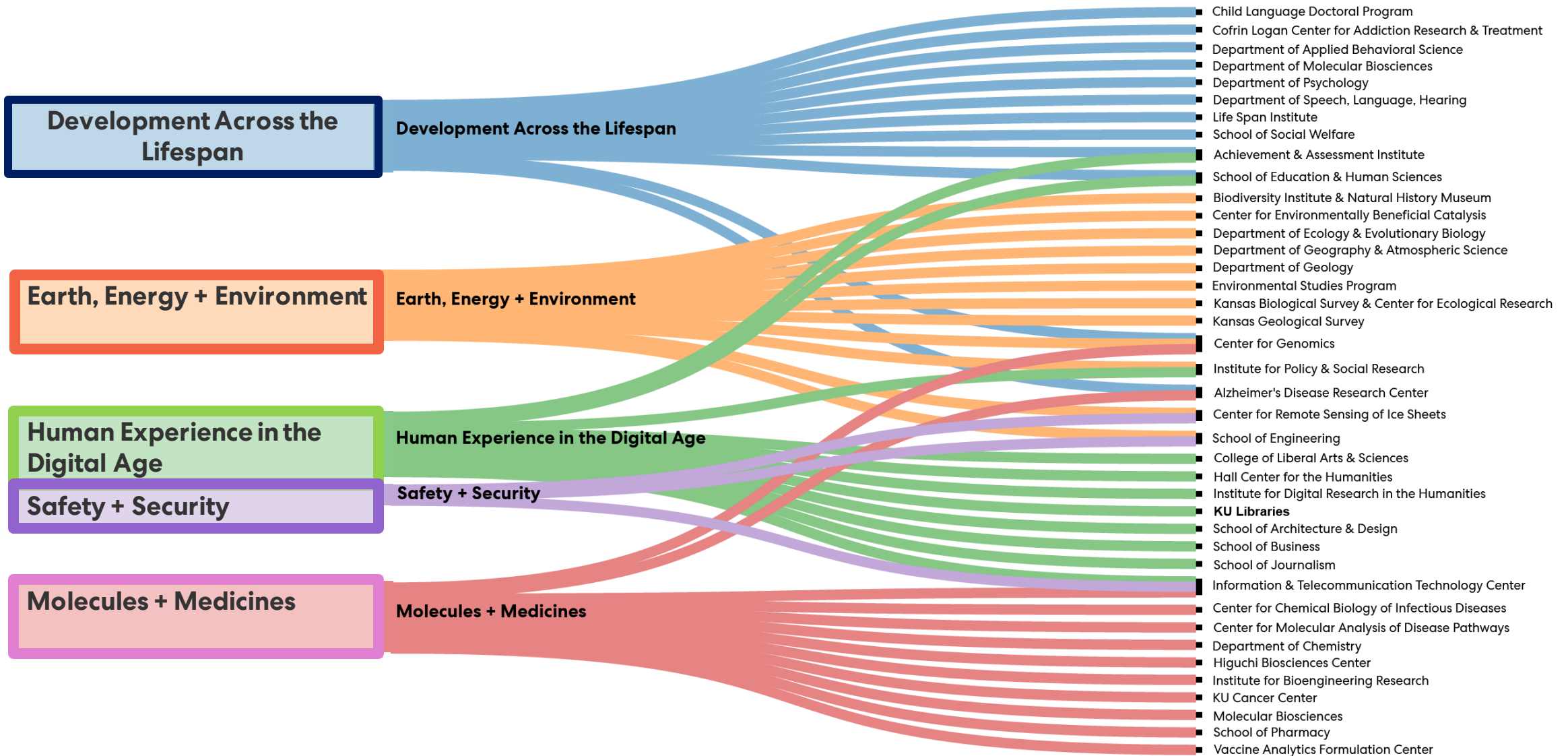
Future of KU

Research Themes

Focus resources on those things that will propel KU forward

RESEARCH THEMES



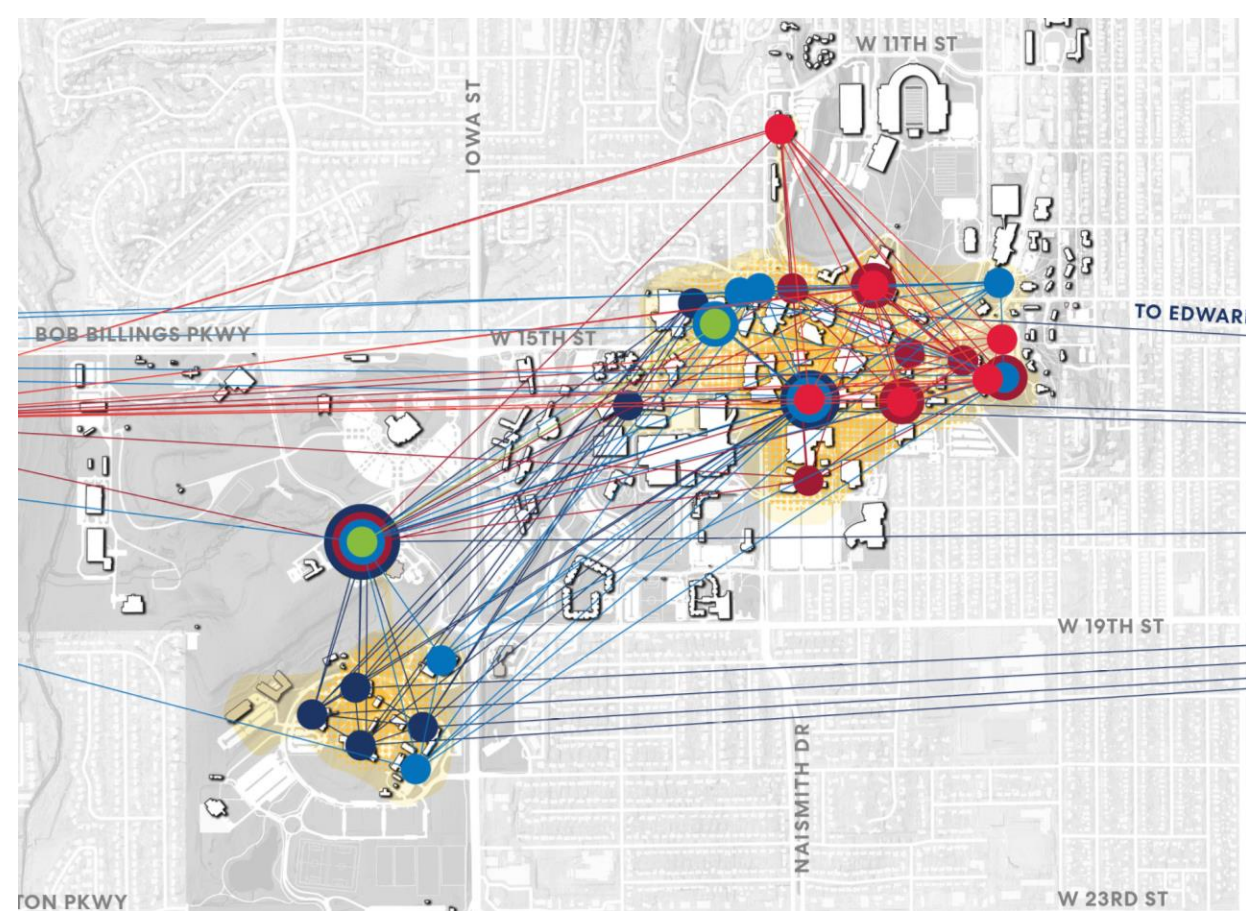


Current State of Research at KU

Current physical fragmentation is not by design but by expedience. It creates barriers to collaboration, hampers undergraduate research, and results in inefficient resource use.

Desired Future State

- Do not organize research space based on departmental units
- Improve transit between the “West Campus” and the “Main Campus”
- Create opportunities for collision to help with collaboration
- Co-locate research, teaching, and office spaces
- Seek economies of scale: build one instead of many

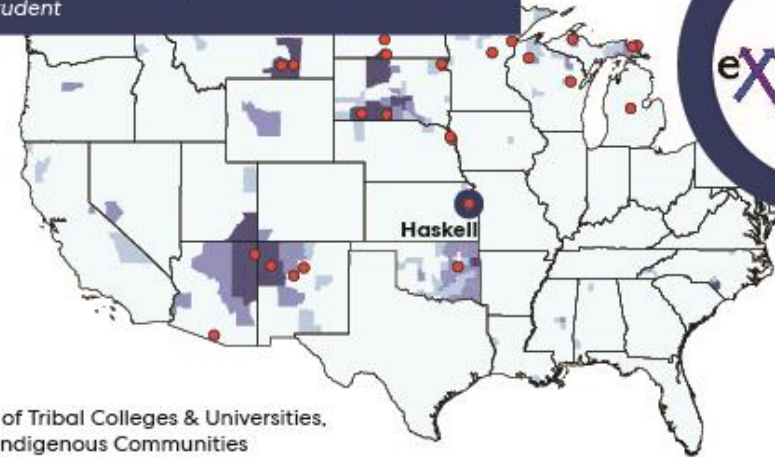


Impact

Aspiration to Serve Communities in Kansas and Beyond

1. Indigenous Populations
2. Rural Populations
3. Underrepresented Minorities / Students of Color
4. Military and Veterans
5. International Students

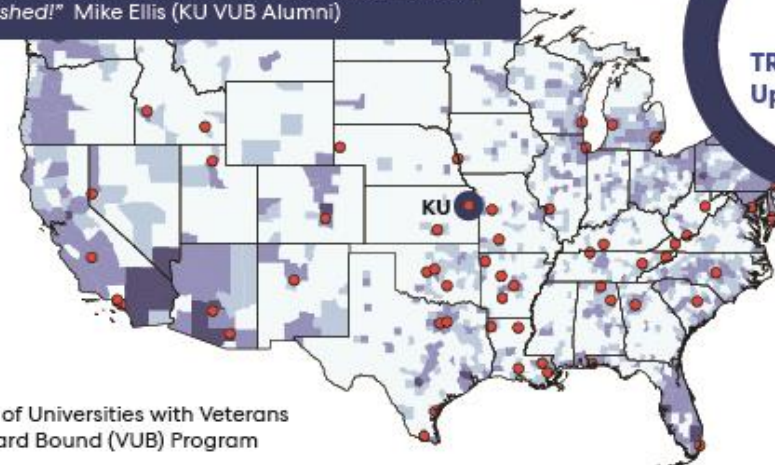
"The program has allowed me to meet new people and get involved with organizations at Haskell."
KU Student



Haskell-KU
exchange
program

Map of Tribal Colleges & Universities,
and Indigenous Communities

"KU TRIO Veterans Upward Bound was the first huge step to helping me get into college and from there, I flourished!" Mike Ellis (KU VUB Alumni)



KU
TRIO Veterans
Upward Bound

Map of Universities with Veterans
Upward Bound (VUB) Program

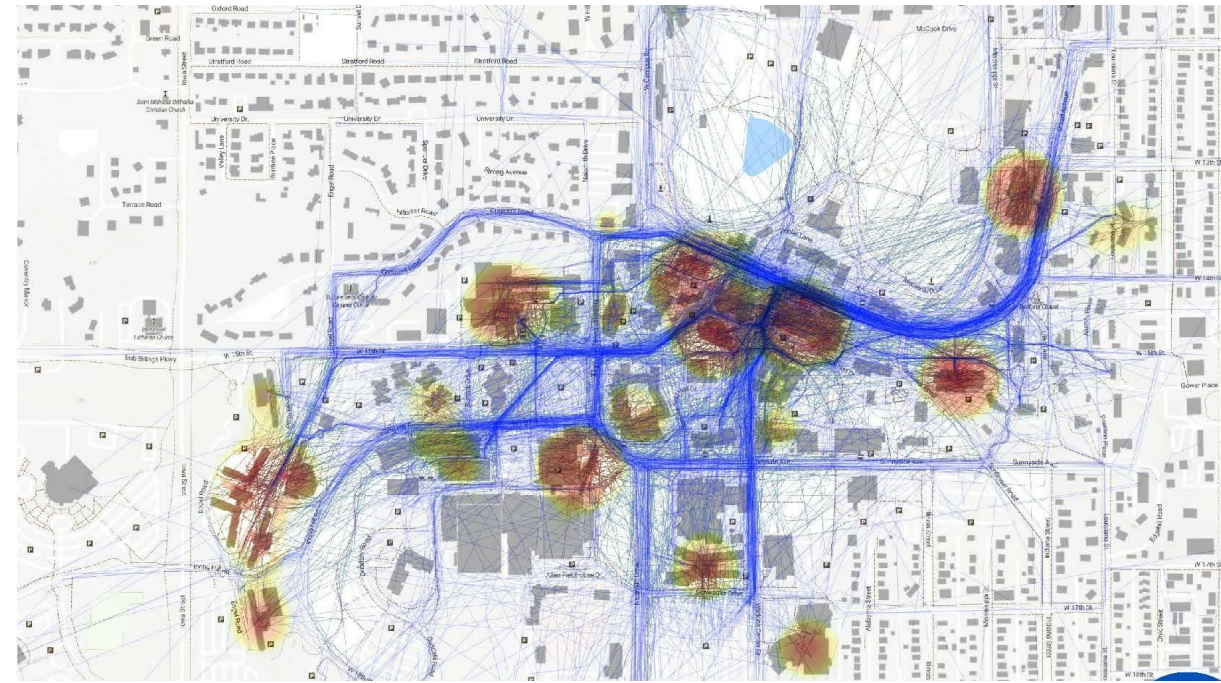
Engagement

Equity

Inclusivity

Sense of Community

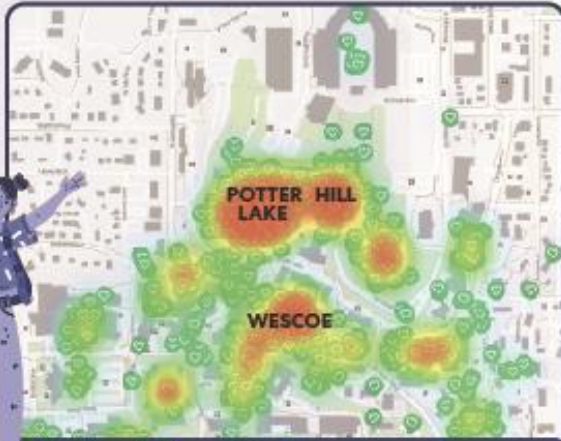
Prioritize investments in renovations, and new facilities that enhance identified centers of engagement



Enhancing the Lived Campus Experience

CAMPUS EXPERIENCE

"Wescoe Beach always has something going on and is fun to walk by just to see."



Students Favorite Spaces on Campus

FACILITIES

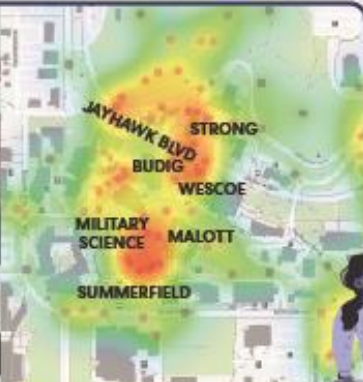
"Stunning up to date features and I love the natural light"

"We need more flexible teaching and meeting spaces of all sizes."



Students Favorite Buildings on Campus

CAMPUS SAFETY



Spaces Where Female Students Feel Unsafe

"At night, I do not feel safe anywhere outdoor except along Jayhawk Blvd"



"Behind strong hall feels sketchy, poorly lit at night."

MOBILITY

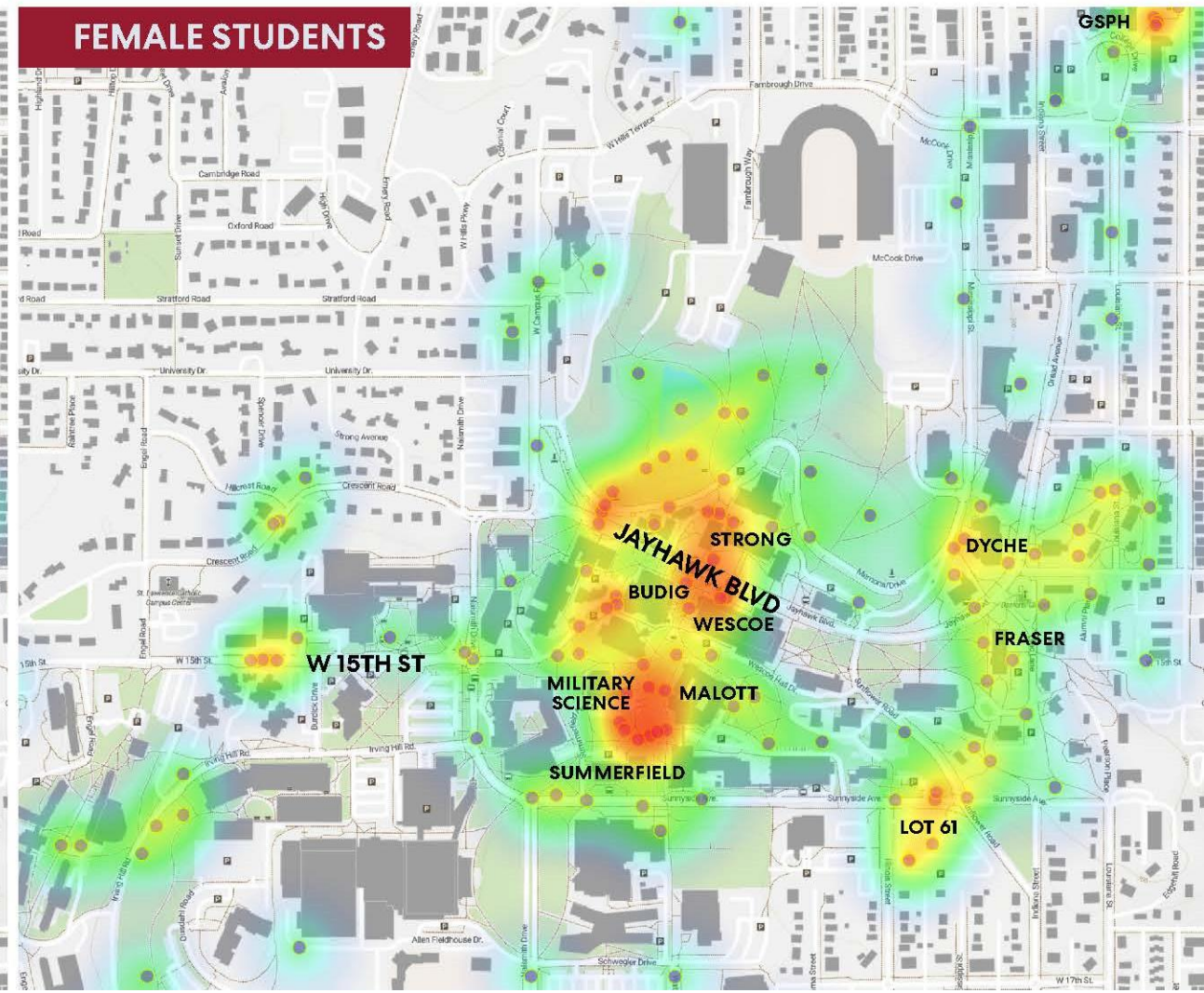
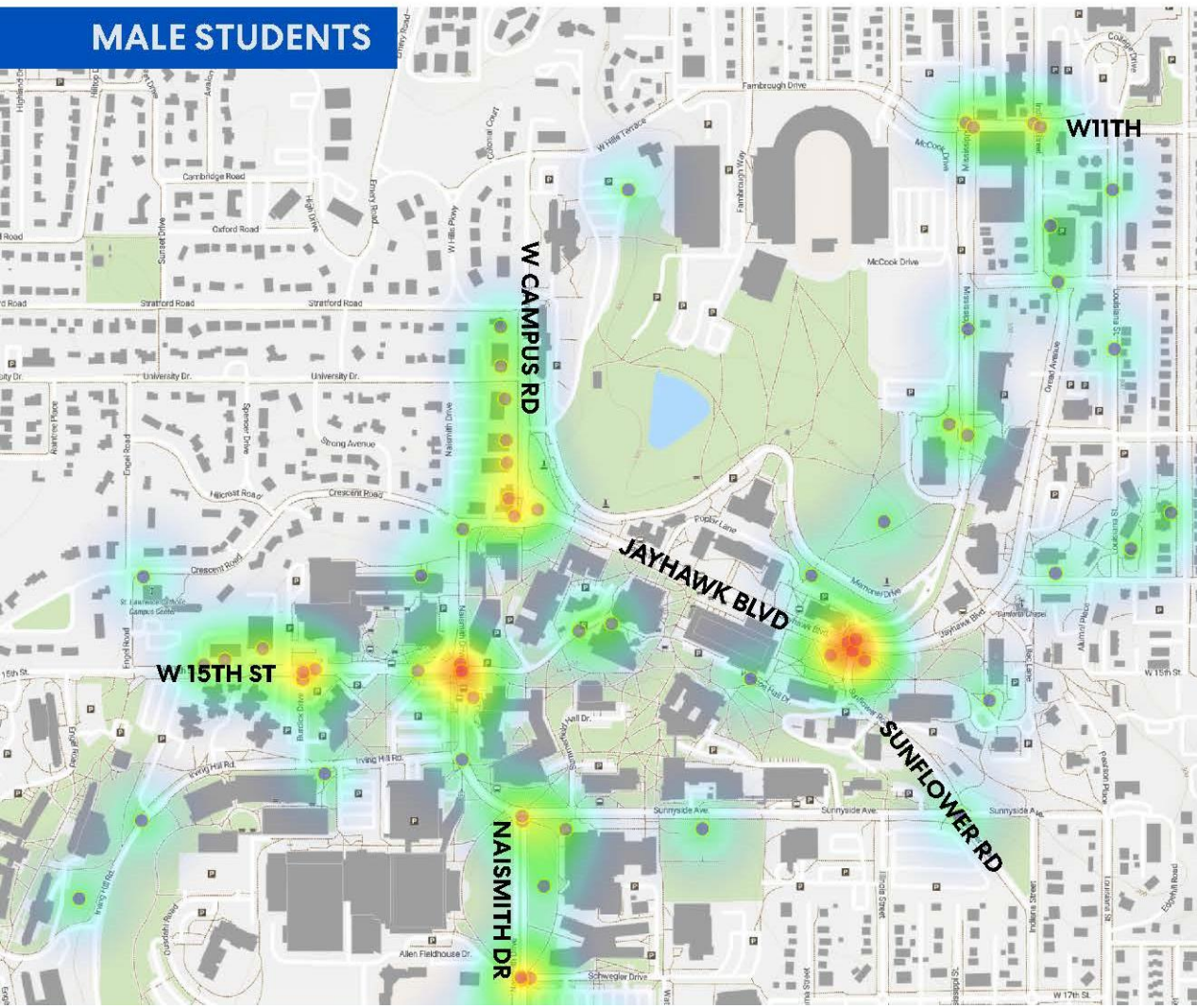


Students Walking Pattern & Activity Nodes

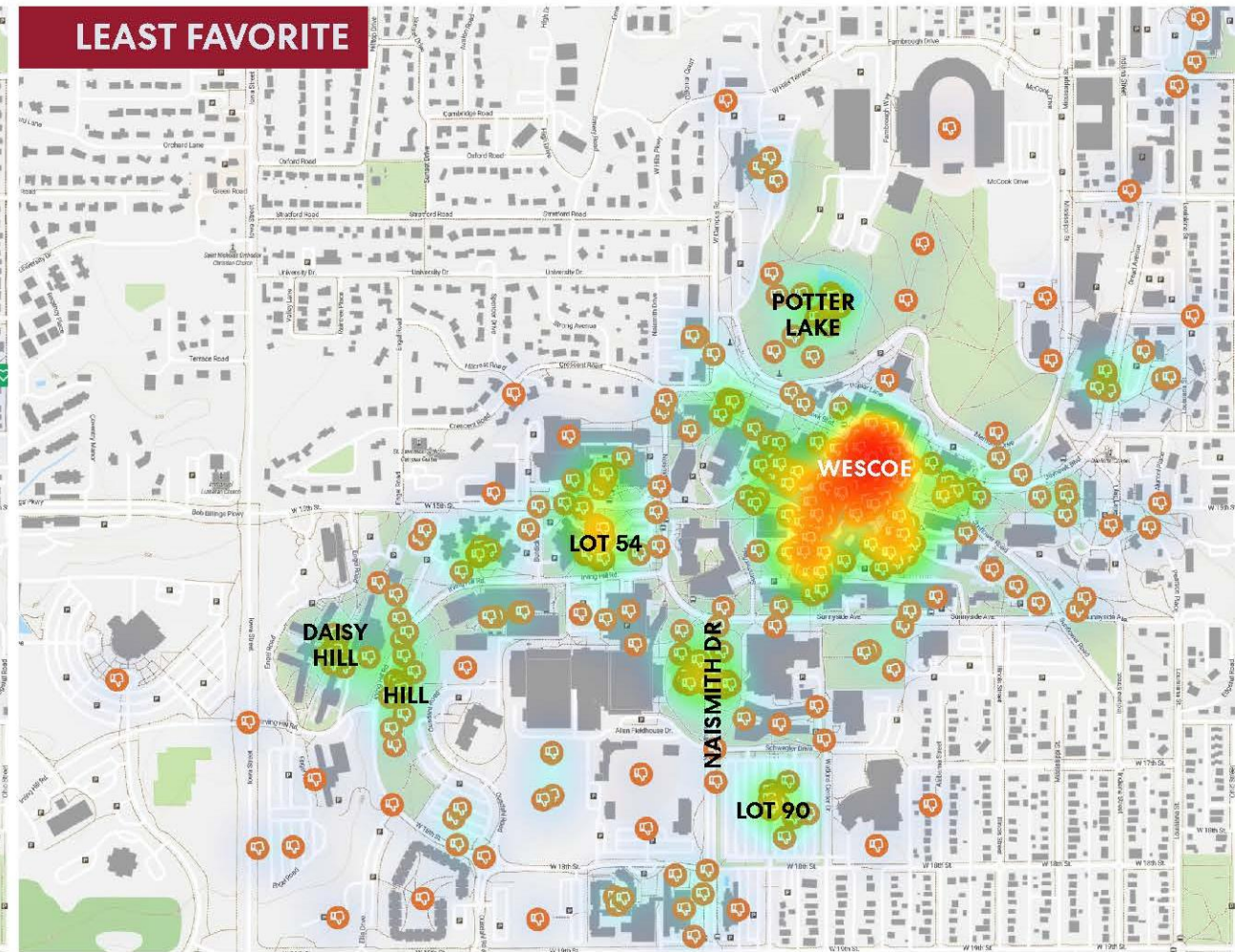
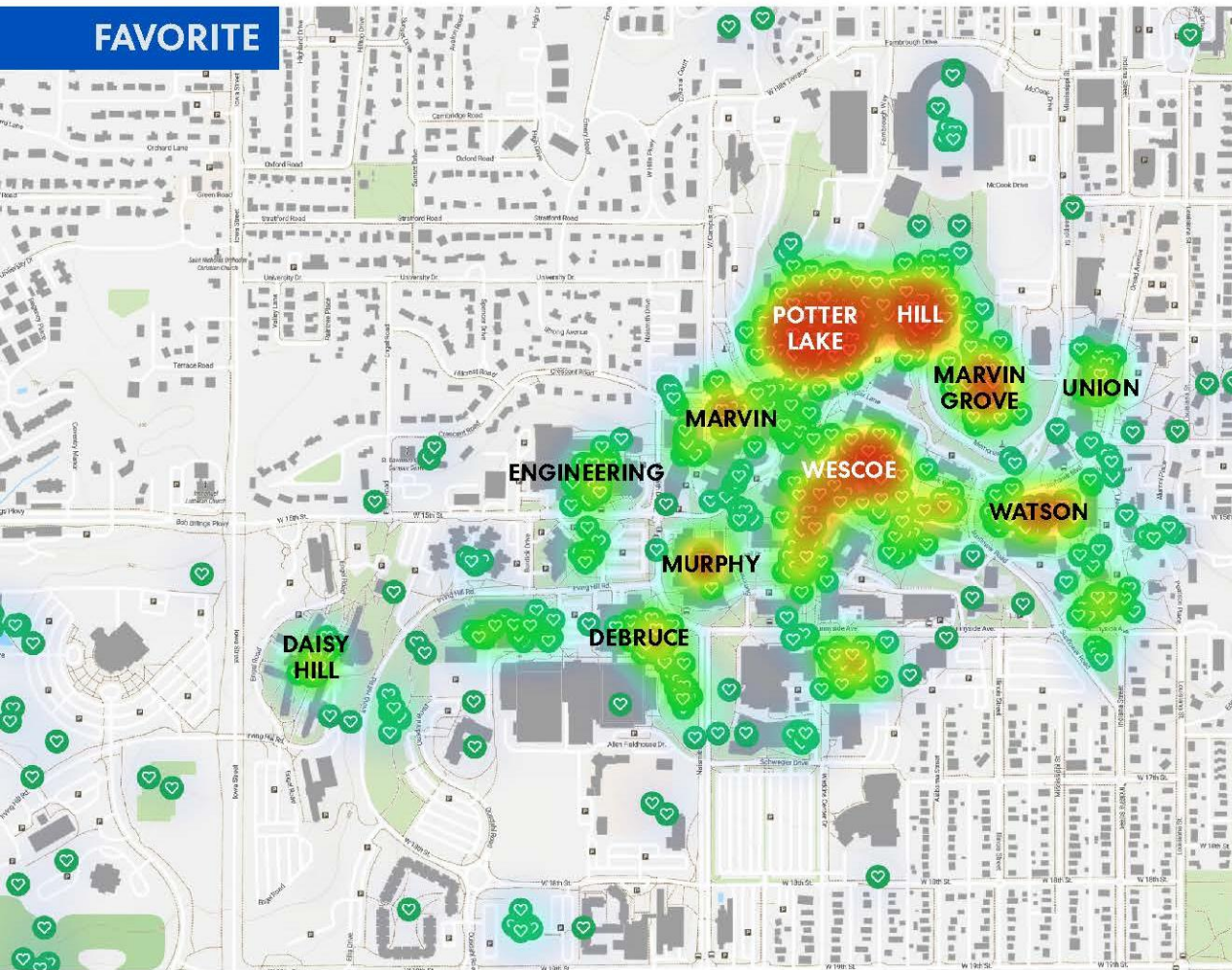
Sidewalk Infrastructure
 Congestion
 Biking Infrastructure
 Safer Crossings
 More Frequent Bus
 Parking Availability
 Better Bus Routes
 Fix Bus App
 Cheaper Parking
 More Affordable
 No Construction



Are there Outdoor Spaces where you feel UNSAFE?



What are your FAVORITE/LEAST FAVORITE Outdoor Spaces on campus?



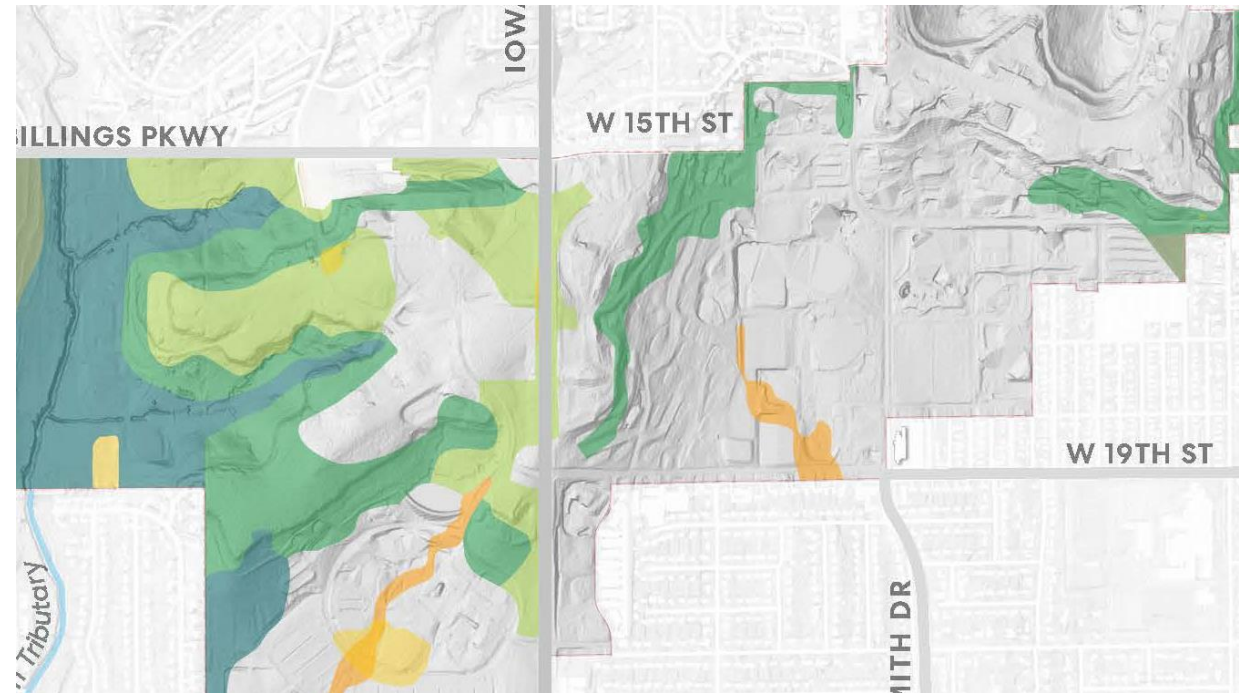
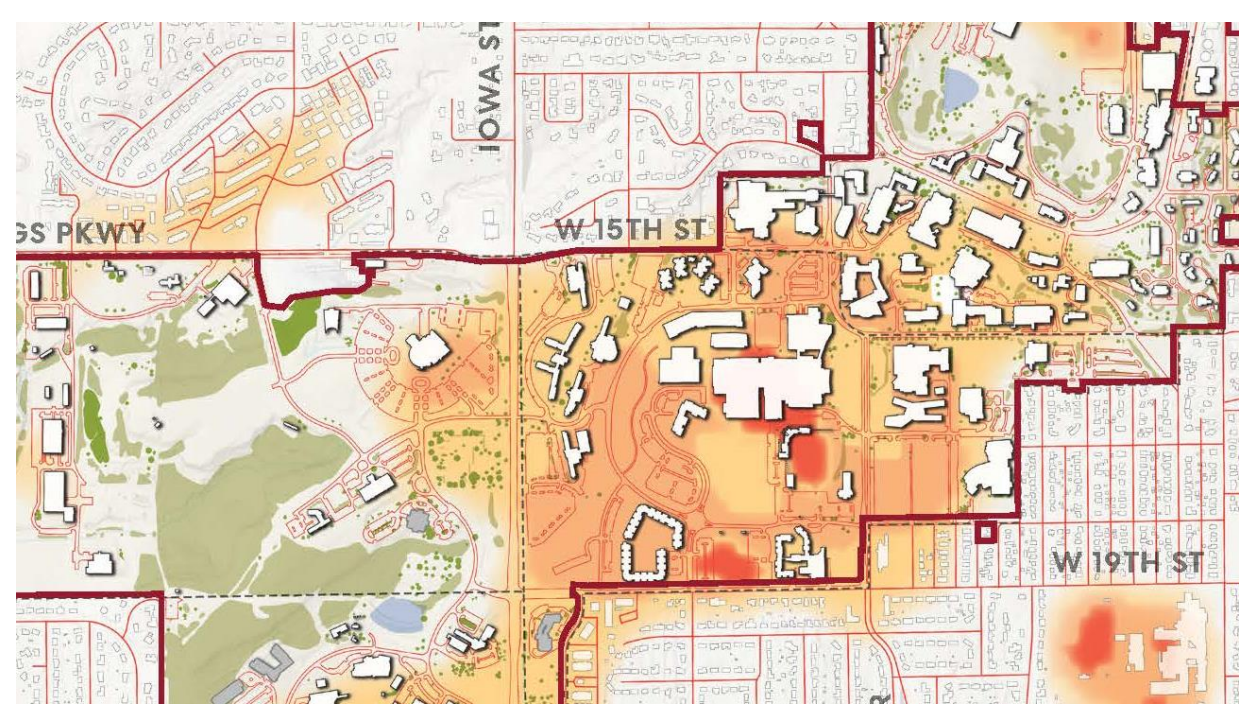
Stewardship

Prioritize

Climate Change

Performance Goals

Build a culture of stewardship
to guide every action



KU LAWRENCE 2024

940K

ASSIGNABLE SQUARE FEET (ASF)
EXTRA SPACE ABOVE
CALCULATED NEED



\$750M

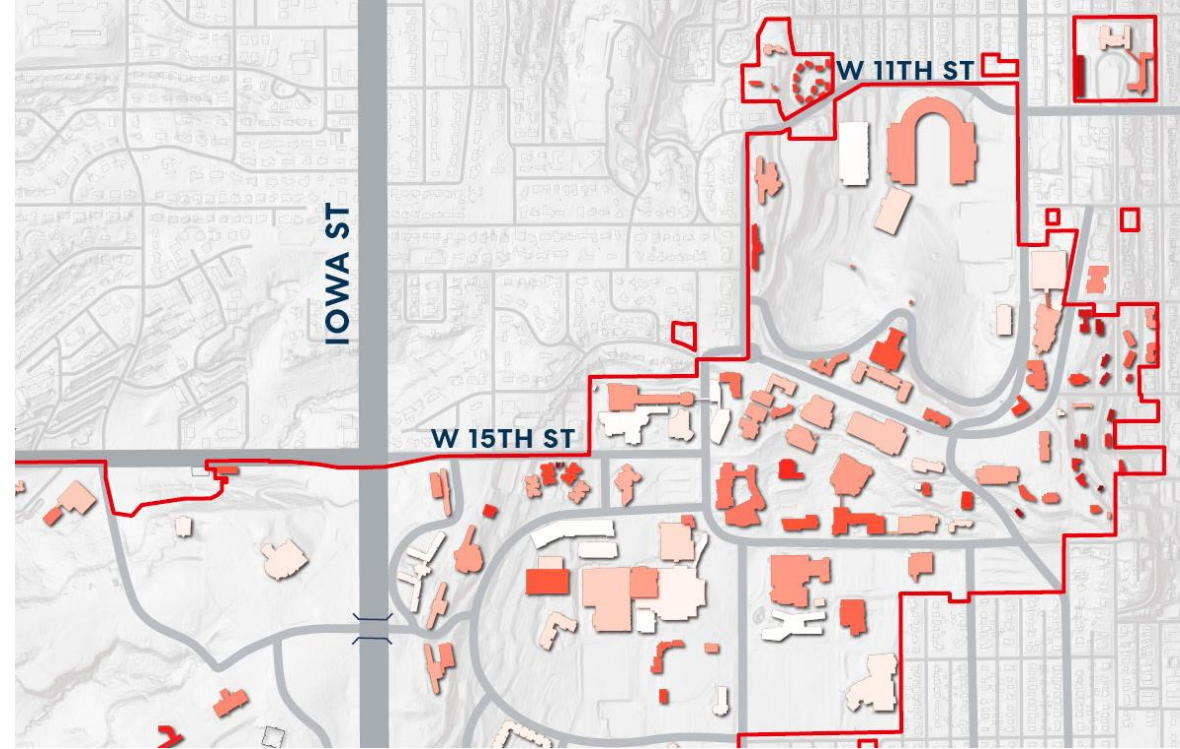
DEFERRED MAINTENANCE



Everything Else We All Want:



- UPDATED INTERIORS
- CAMPUS AMENITIES
- LATEST TECHNOLOGY
- ADA ACCESSIBILITY
- INCLUSIVE RESTROOMS
- USABLE GREEN SPACE
- ETC.

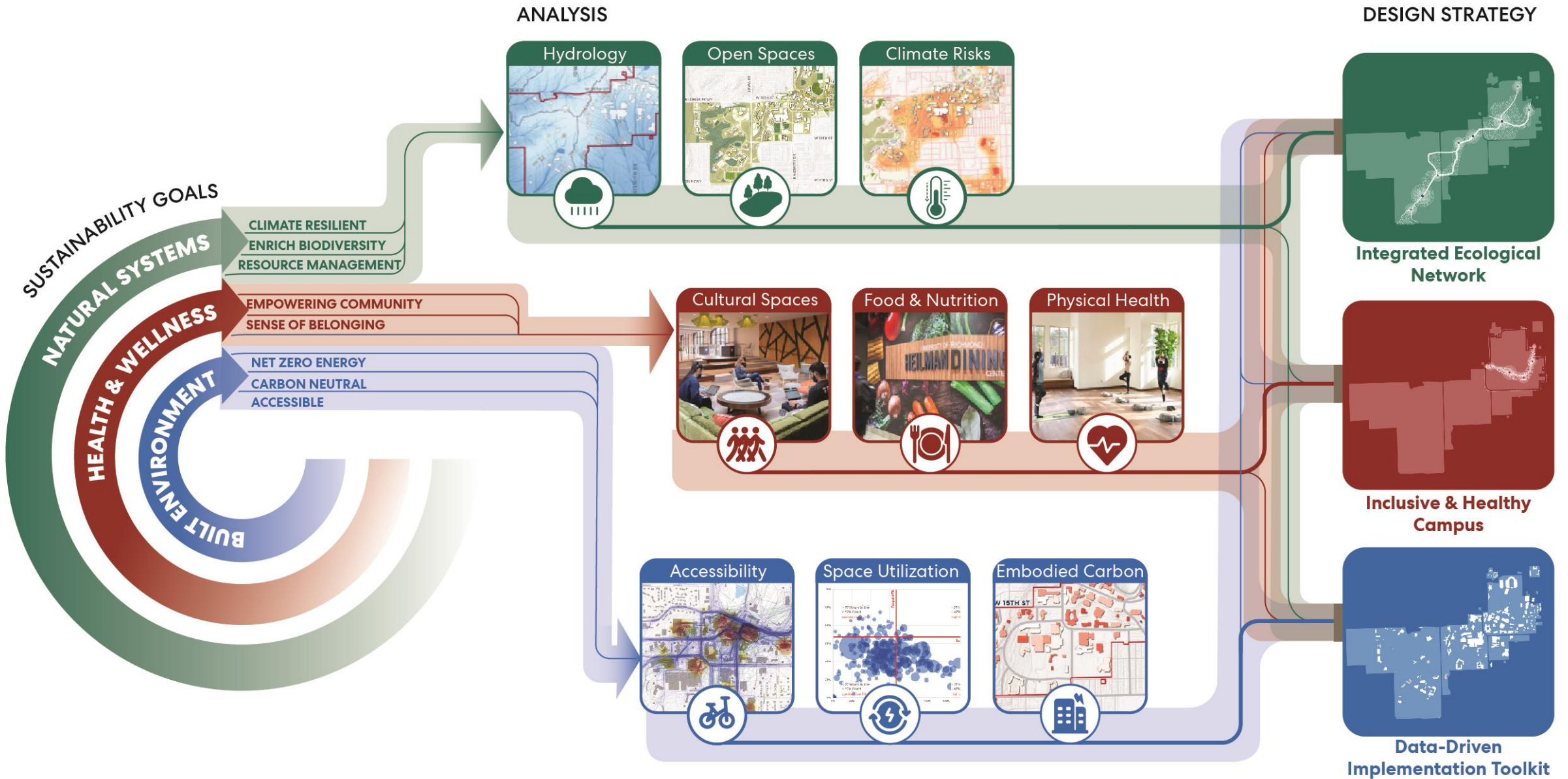


Our Collective Challenge

**The cost* of business-as-usual
is not sustainable in the long run.**

**THE UNIVERSITY OF KANSAS MUST
EVOLVE TO CONTINUE ITS IMPACT
ON THE GLOBAL COMMUNITY.**

Living Design Framework



Sustainable Landscape Framework

Establish a landscape infrastructure that will serve as the foundation for campus pedestrian activity and vibrant outdoor life.

Enhancing Ecology

REDUCE TURF



NATIVE & ADAPTED PLANTS




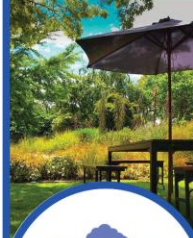
PRESERVATION STEWARDSHIP



LINEAR SHADE TREES



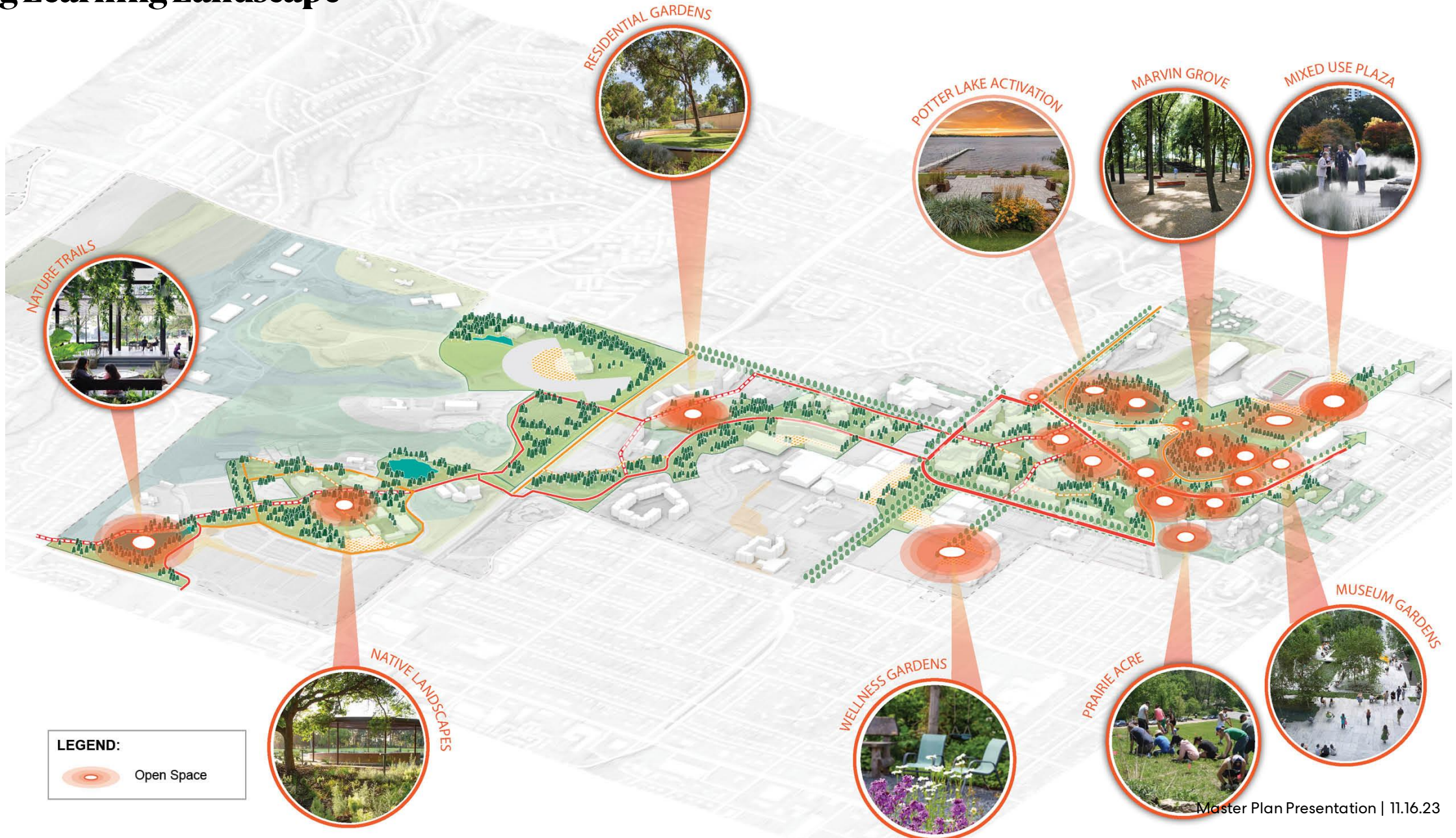
CLUSTER SHADE TREES



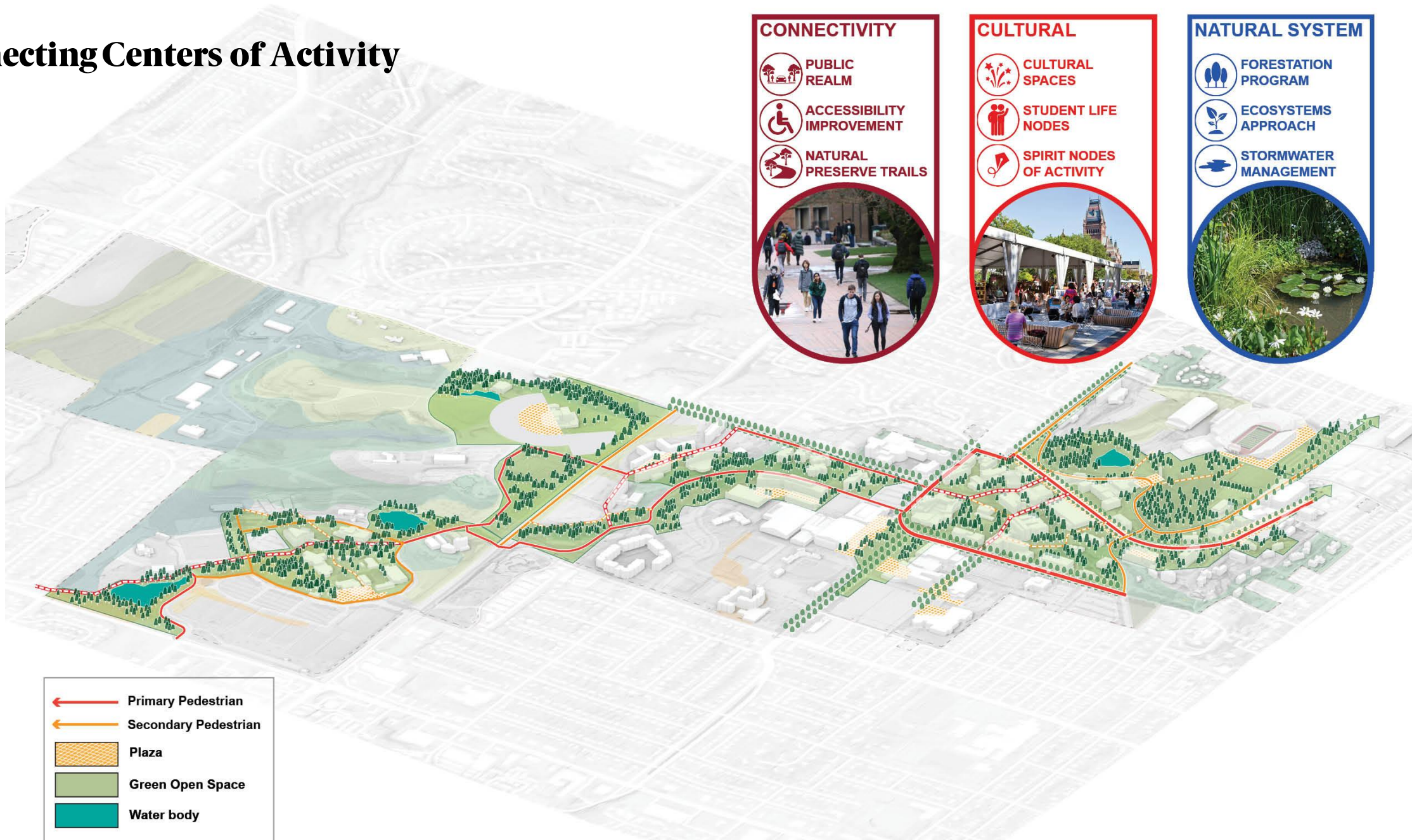
NATURE PRESERVE WITH TRAIL



Living Learning Landscape



Connecting Centers of Activity



CONNECTIVITY

- PUBLIC REALM
- ACCESSIBILITY IMPROVEMENT
- NATURAL PRESERVE TRAILS

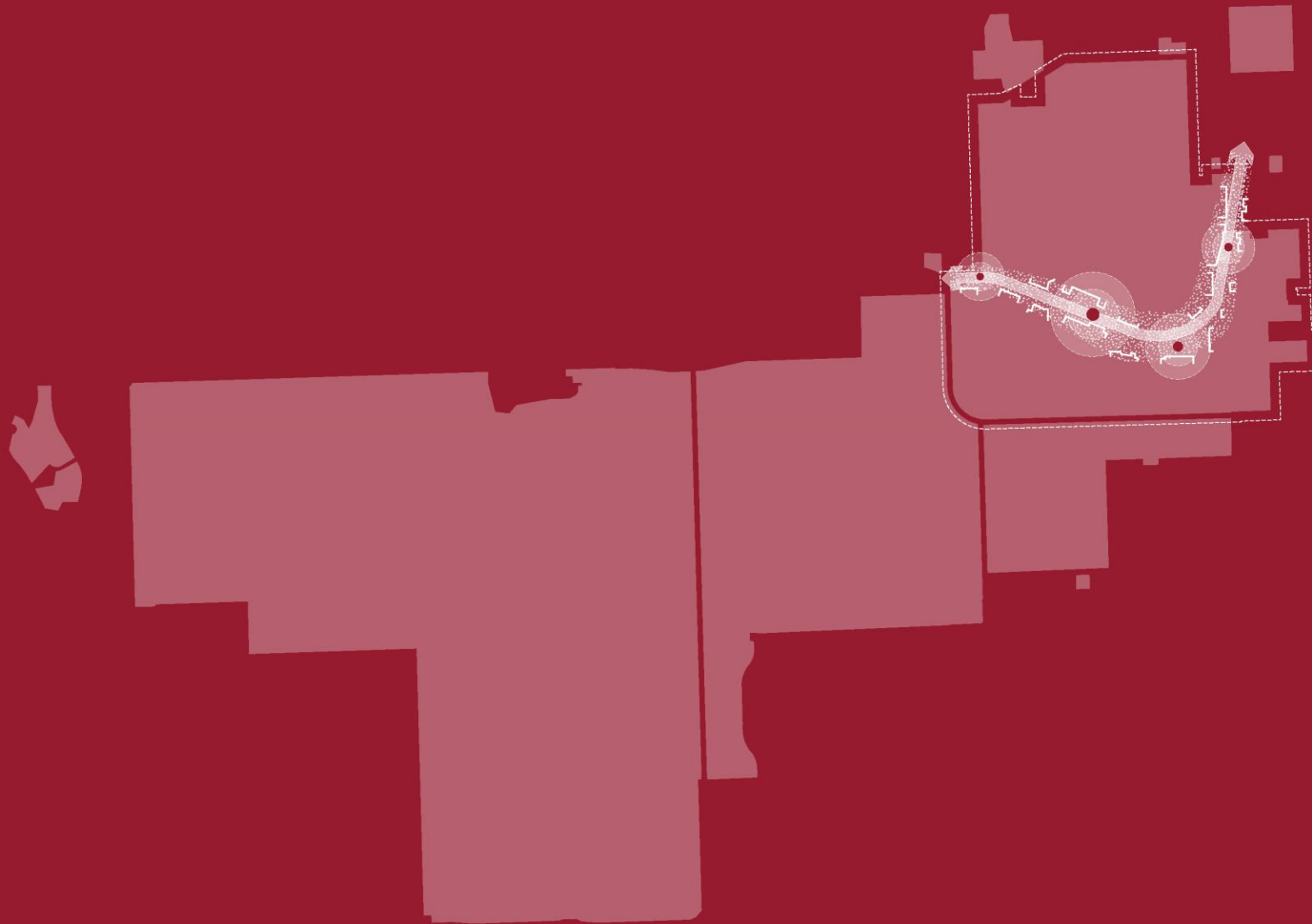
CULTURAL

- CULTURAL SPACES
- STUDENT LIFE NODES
- SPIRIT NODES OF ACTIVITY

NATURAL SYSTEM

- FORESTATION PROGRAM
- ECOSYSTEMS APPROACH
- STORMWATER MANAGEMENT

- Primary Pedestrian
- Secondary Pedestrian
- Plaza
- Green Open Space
- Water body

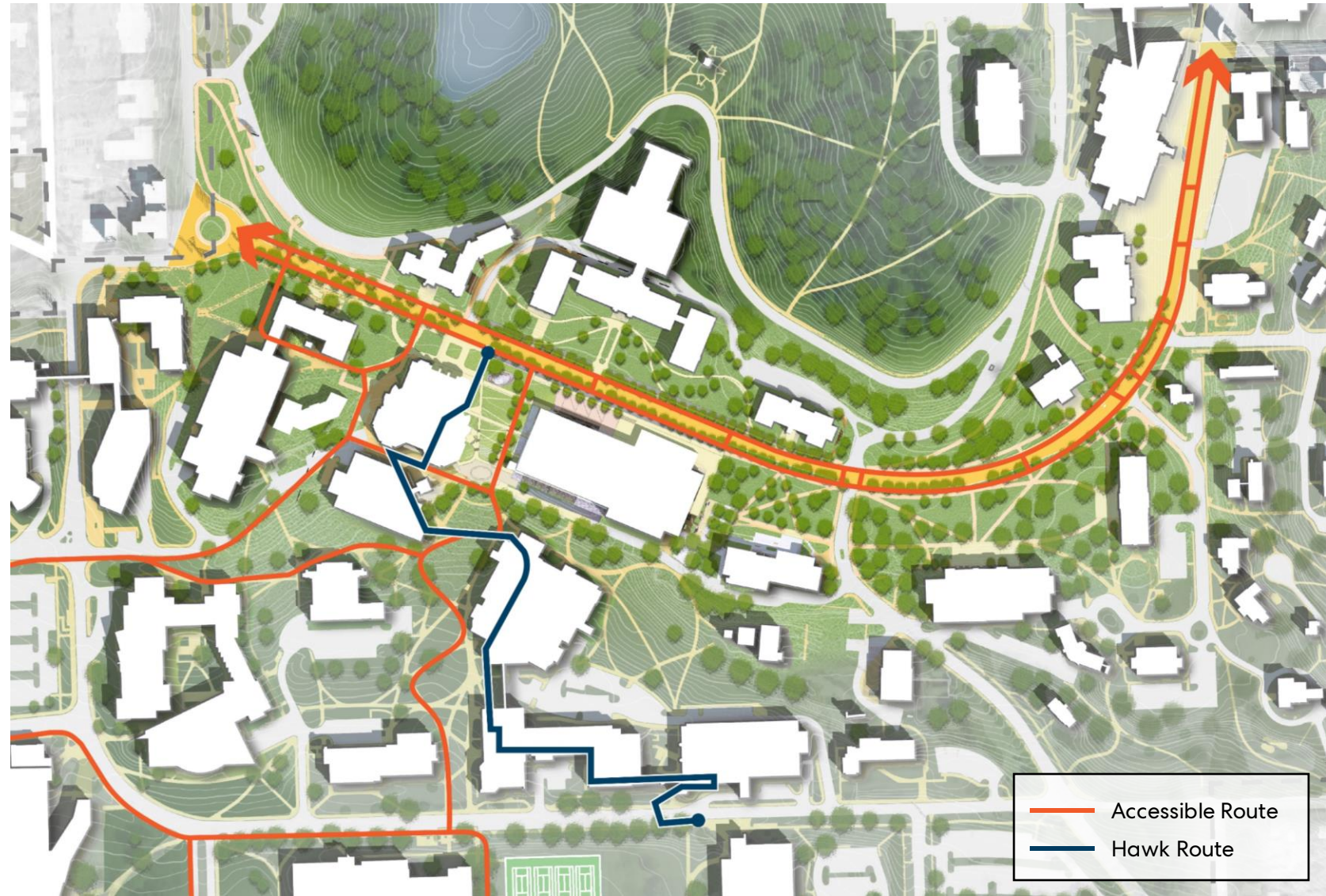
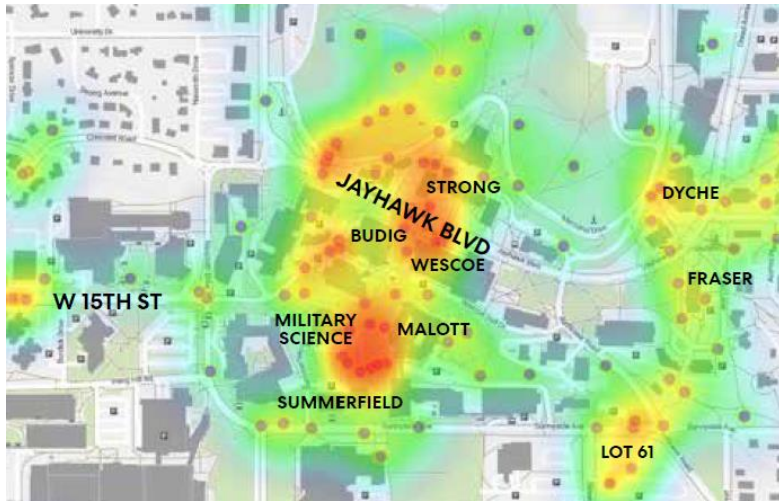


Inclusive and Welcoming Campus

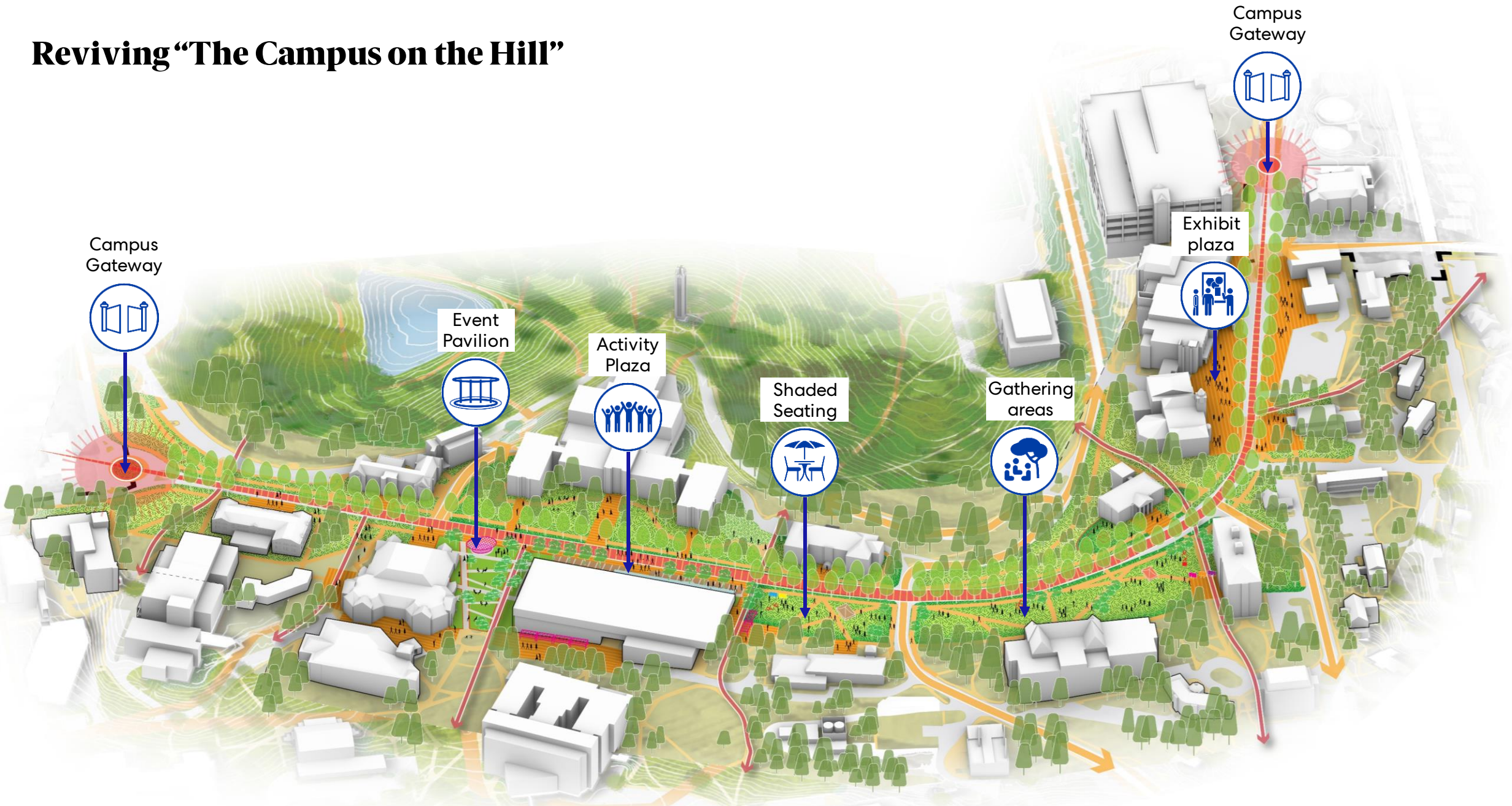
Cultivate a campus environment where diversity thrives, fostering a sense of belonging for every member and promoting inclusivity through thoughtfully integrated spaces, services, and interactions

Universal access strategies

Addressing safety concerns raised by female students for improved lighting.

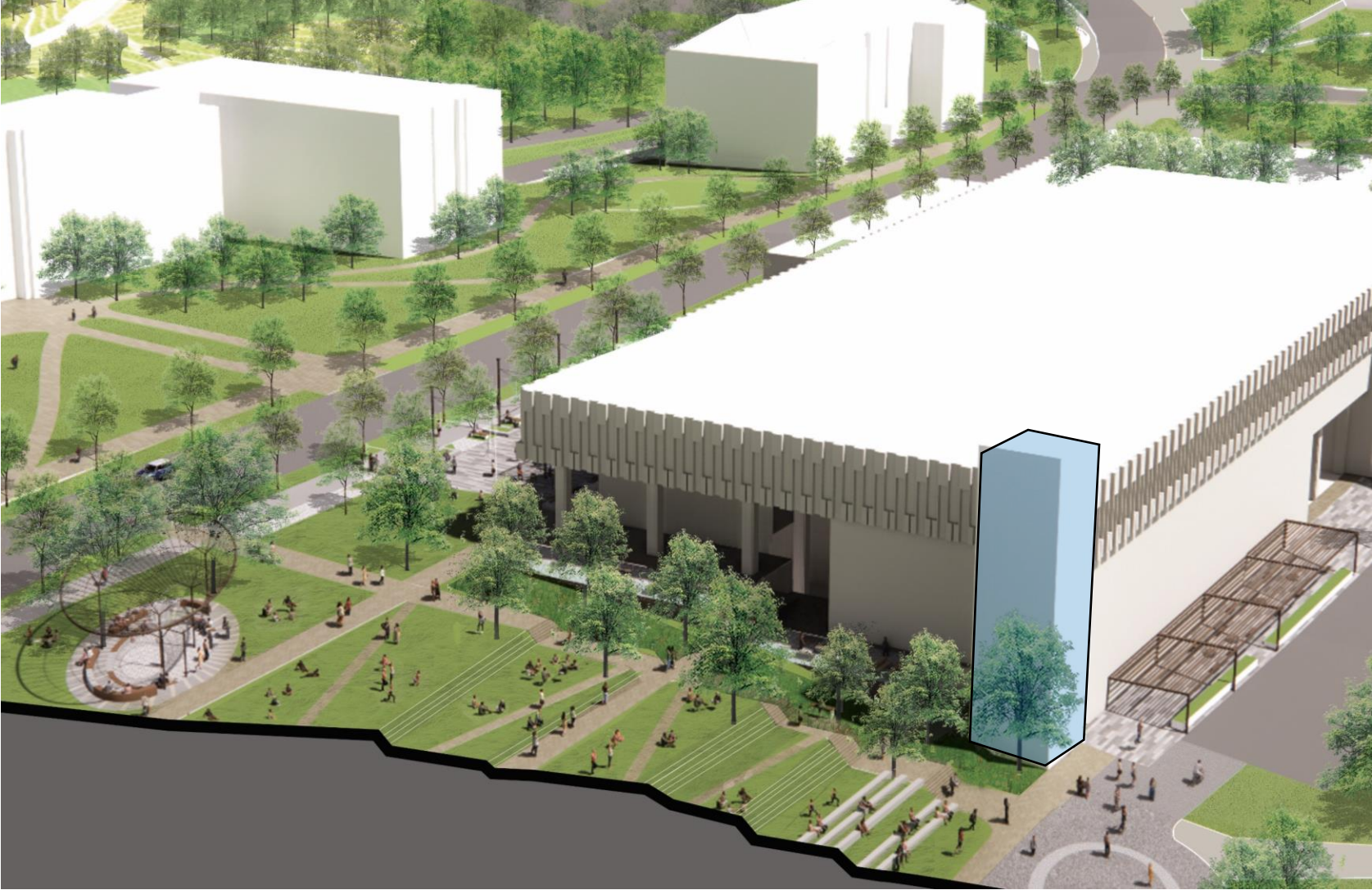
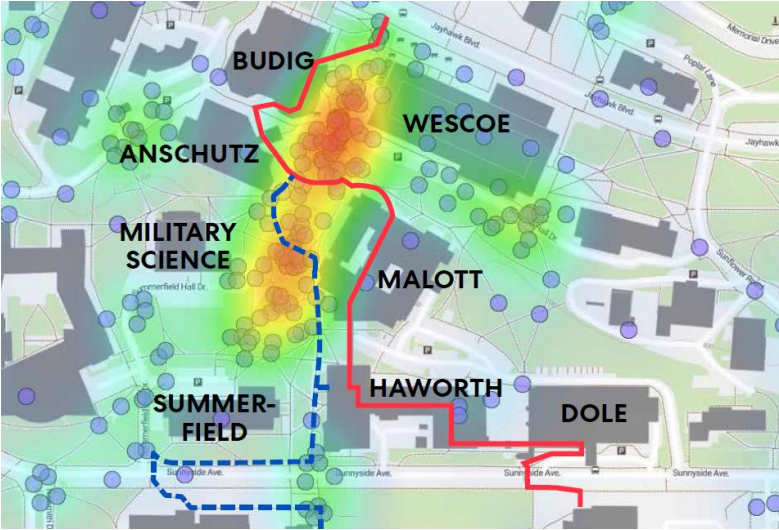


Reviving "The Campus on the Hill"



Wescoe Hill

Addressing accessibility concerns raised by students.



Top of Wescoe Hill – Existing view





TREE CANOPY



SCULPTURAL PAVILION



SHADED OPEN AREAS

Wescoe Pavilion

Wescoe Beach – Existing view



Wescove Beach - Proposed



SHADED BOULEVARD STREET



INCLUSIVE SIGNAGES



FLEXIBLE EVENT SPACES



ADAPTIVE SPACES



PERMEABLE PAVING



Jayhawk Quad – Existing view





**PRESERVE NATIVE
VEGETATION**



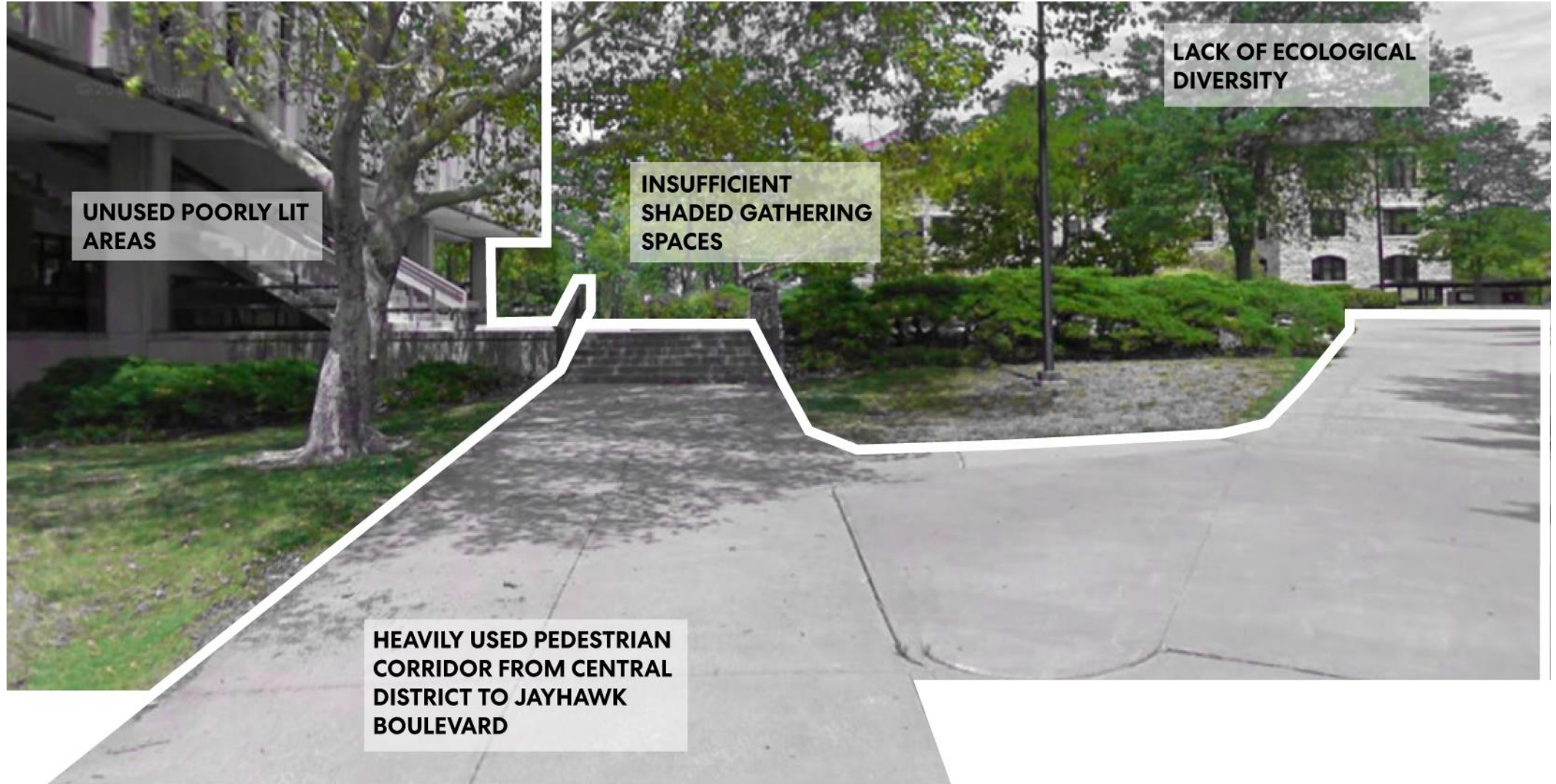
SHADED OPEN AREAS



POLLINATOR GARDEN



Jayhawk Quad- Existing view





SMART WAYFINDING



MULTI-PURPOSE WALL



DIGITAL CAMPUS SYSTEMS

Re-imagine Jayhawk Quad

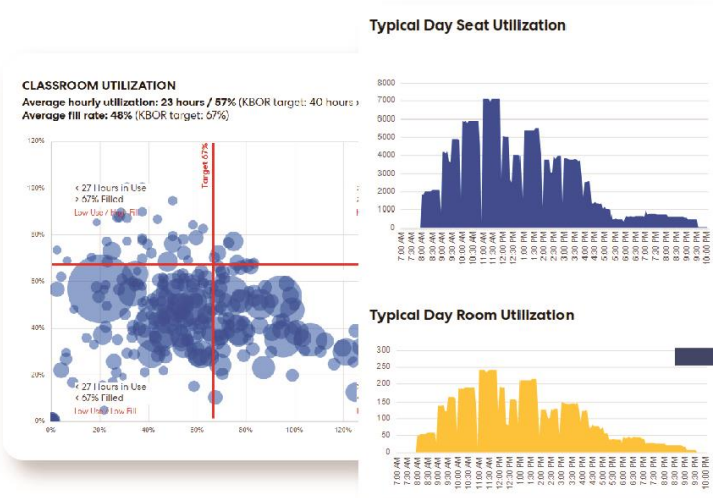


Implementation Toolkit

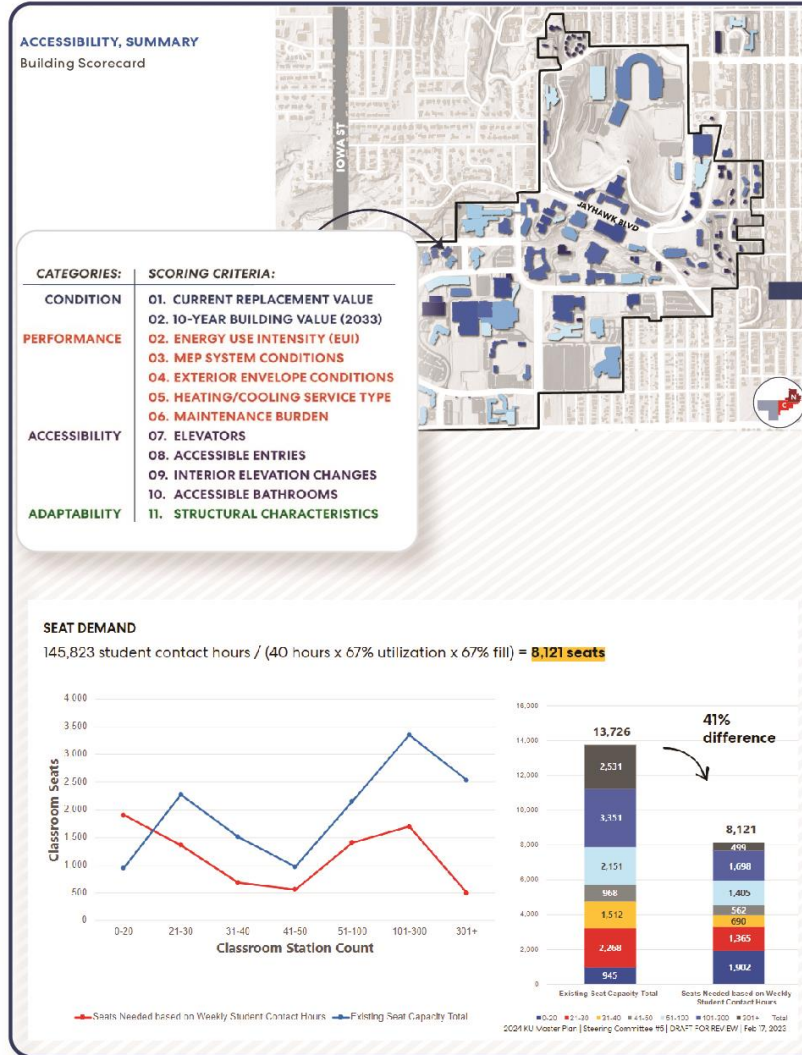
Navigate a sustainable journey forward by optimizing campus space through strategic repurposing, resource alignment, enriched experiences, and data-driven insights.

Dynamic Implementation Toolkit

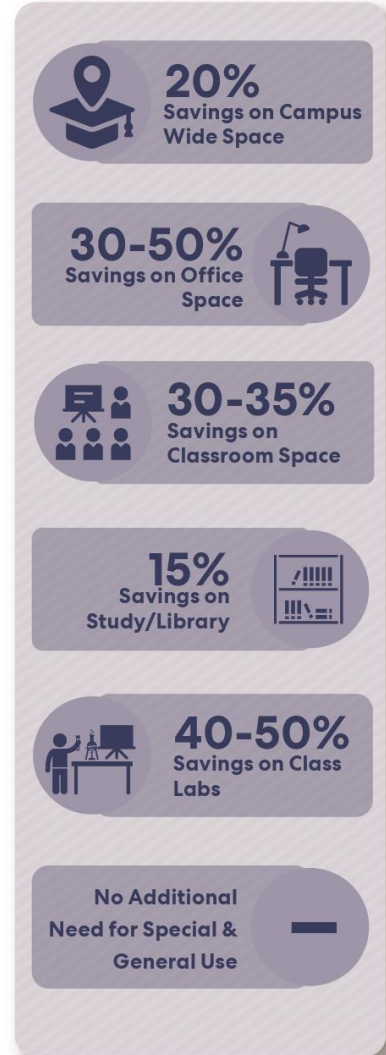
1 DATA ORGANIZATION



2 DATA PROCESSING & REPORTING



3 DECISION MAKING



BUILDING SCORECARD

CATEGORIES:	SCORING CRITERIA:
CONDITION	01. CURRENT REPLACEMENT VALUE 02. 10-YEAR BUILDING VALUE (2033)
PERFORMANCE	02. ENERGY USE INTENSITY (EUI) 03. MEP SYSTEM CONDITIONS 04. EXTERIOR ENVELOPE CONDITIONS 05. HEATING/COOLING SERVICE TYPE 06. MAINTENANCE BURDEN
ACCESSIBILITY	07. ELEVATORS 08. ACCESSIBLE ENTRIES 09. INTERIOR ELEVATION CHANGES 10. ACCESSIBLE BATHROOMS
ADAPTABILITY	11. STRUCTURAL CHARACTERISTICS

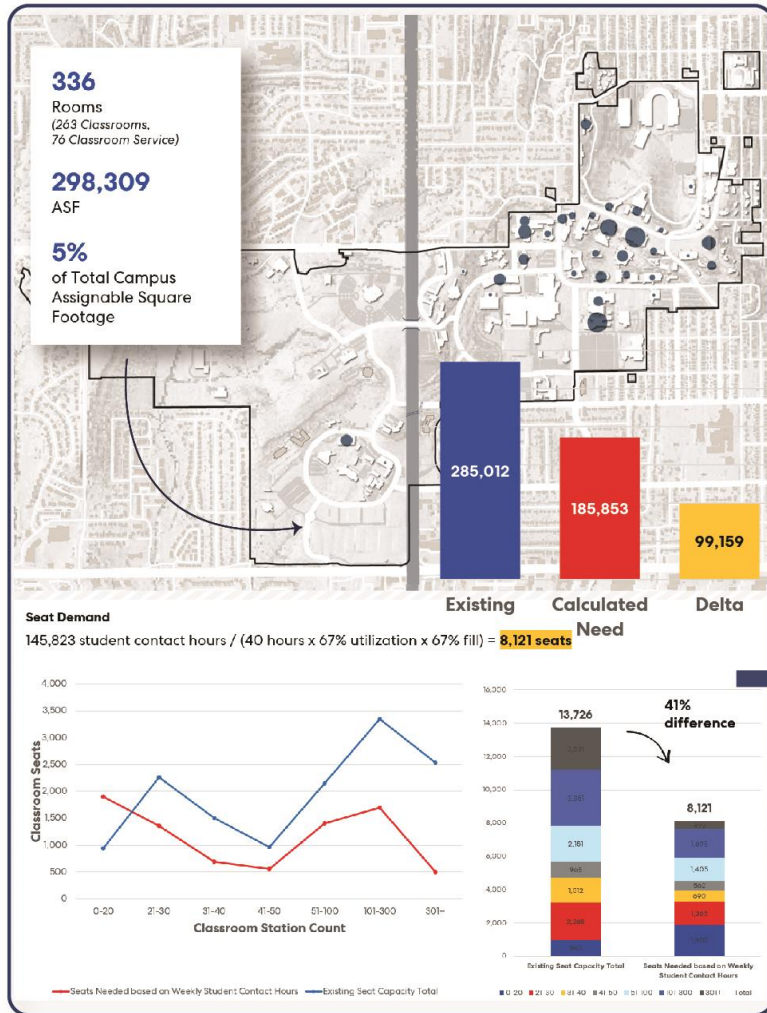
FOCUSING ON “MISSION CRITICAL”

The following slides highlight scores for mission critical buildings, which are defined by KBOR as:

“Mission critical buildings are state-owned academic, research and supporting facilities and infrastructure. They do not include affiliated corporations, auxiliaries and athletic buildings.”

Learning Environments

1 SPACE NEEDS ASSESSMENT



2 POLICY RECOMMENDATIONS



Central Management
of all classroom space allocation, subject to approval.



Hybrid Learning
Technology must support Hybrid and Online learning



Flexible Classroom
to accommodate multiple smaller size classroom in a large space



Maximize Space Use
Classroom space can be shared for student related activities and groups



Maximize Use Prior to Building New
by allocating classroom space using existing facilities first.

3 IMPACT



35% Square footage Savings in classroom spaces

~30% Square footage Savings in smaller classroom spaces



Technology
To support Hybrid & Online Learnings

Cost Savings
In Operations & Management



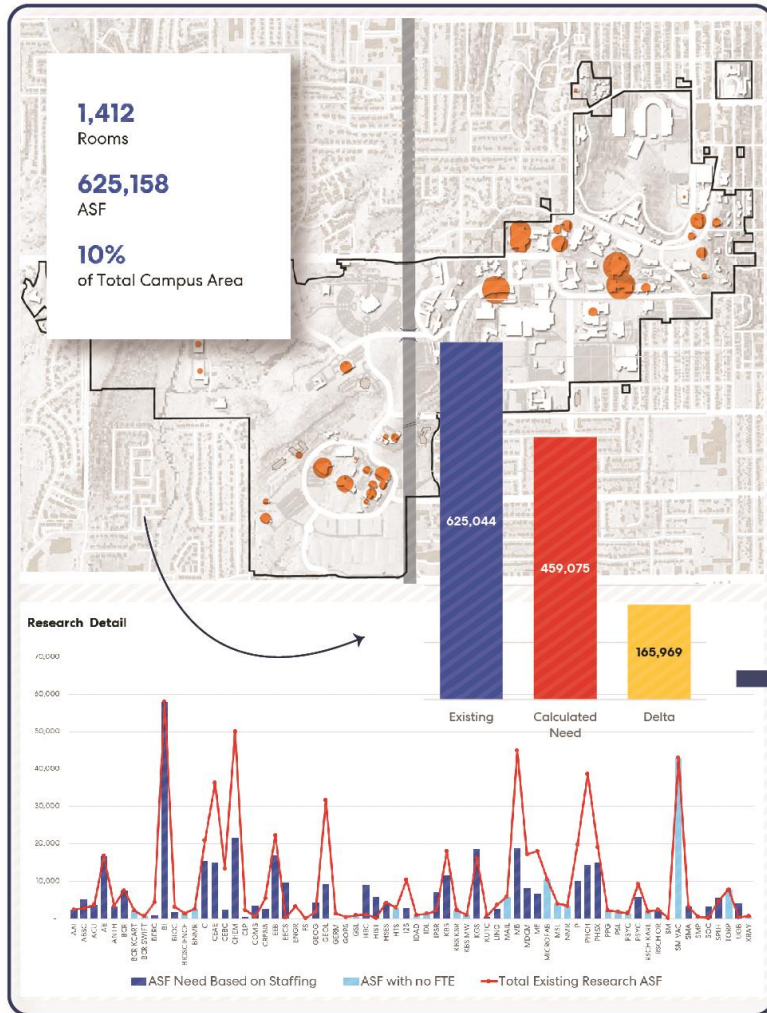
Collaboration
Foster Inter-disciplinary learning

Time Savings
Ease of Coordination & Management



Foster Research

1 SPACE NEEDS ASSESSMENT



2 POLICY RECOMMENDATIONS

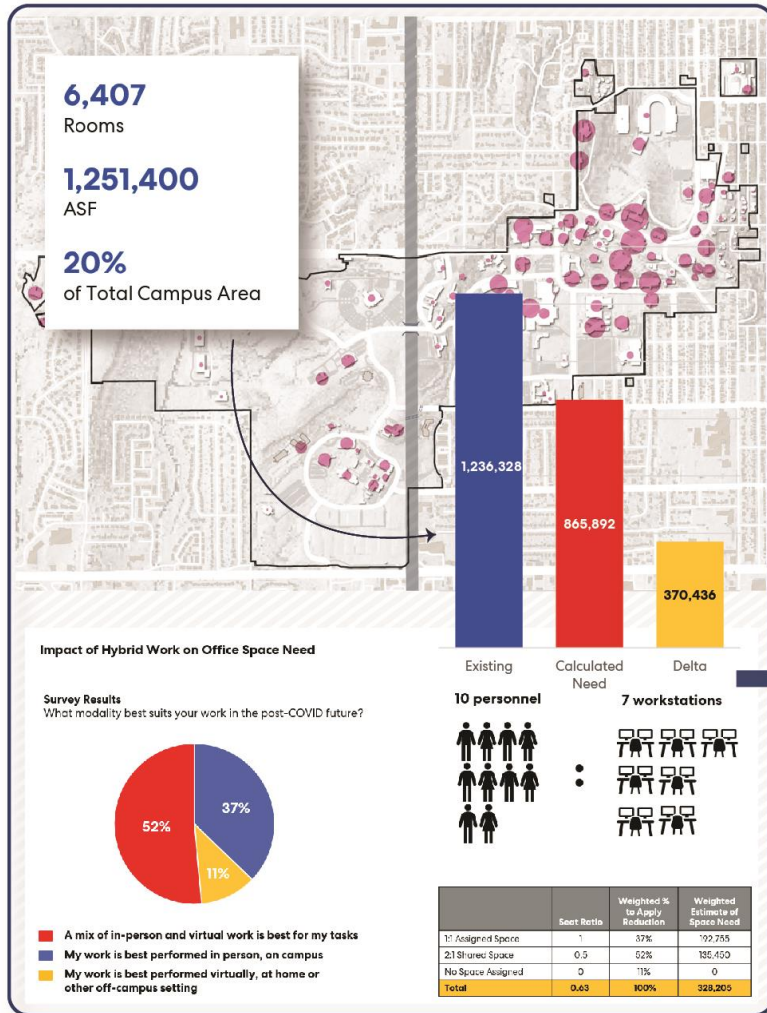
- Central Management**
of space allocation, subject to approval by the Department of Space Management, Provost and Operations.
- Space Allocation**
should consider research personnel and a standard square footage multiplier.
- Time-based Space Assignment**
are flexible, subject to change as research activities evolve.
- Vacant & Underutilized Space**
should be reassigned to Space Management for evaluation.
- Maximize Use Prior to Building New**
by allocating research space using existing facilities first.

3 IMPACT

- 30%** Savings on Research lab Space
- Collaboration**
Foster Inter-disciplinary learning
- Reduced Carbon**
Footprint & Right Sizing Campus
- Cost Savings**
In Operations & Management
- Efficiency**
Updated & Well equipped facilities
- Time Savings**
Ease of Coordination & Management

Workplace

1 SPACE NEEDS ASSESSMENT



2 POLICY RECOMMENDATIONS



3 IMPACT



FUTURE KU /

10-YEAR MASTER PLAN



Public Realm and Landscape



Building Reset



Building Renovations and Additions



New Buildings



Infrastructure



Public Realm & Landscape

- **11th & Mississippi Gateway**
- **Jayhawk Blvd Landscape Spaces**
- **Wescoe Hill**
- **Campus Streets**
- **Campus Edge Landscape Upgrades**



**Student
Success**



**Health &
Well Being**



**Research &
Discovery**



Building Reset

- Lindley Hall
- Twente Hall
- Robinson Center



Student
Success



Health &
Well Being



Research &
Discovery



Building Renovations and Additions

- **Anschutz Library Student Success Center**
- **School of Architecture Renovation and Addition**
- **School of Law Renovation**
- **Watson Library Renovation**



**Student
Success**



**Health &
Well Being**



**Research &
Discovery**



New Buildings

- **Health and Wellness Center**
- **Interdisciplinary Science Buildings (ISB2)**
- **KU Memorial Stadium Reconstruction and Conference Center**



**Student
Success**



**Health &
Well Being**



**Research &
Discovery**



Infrastructure

- **Parking Garage (location TBD)**
- **Utility Infrastructure Upgrades**
- **Technology, Security, and Safety Upgrades**



**Student
Success**

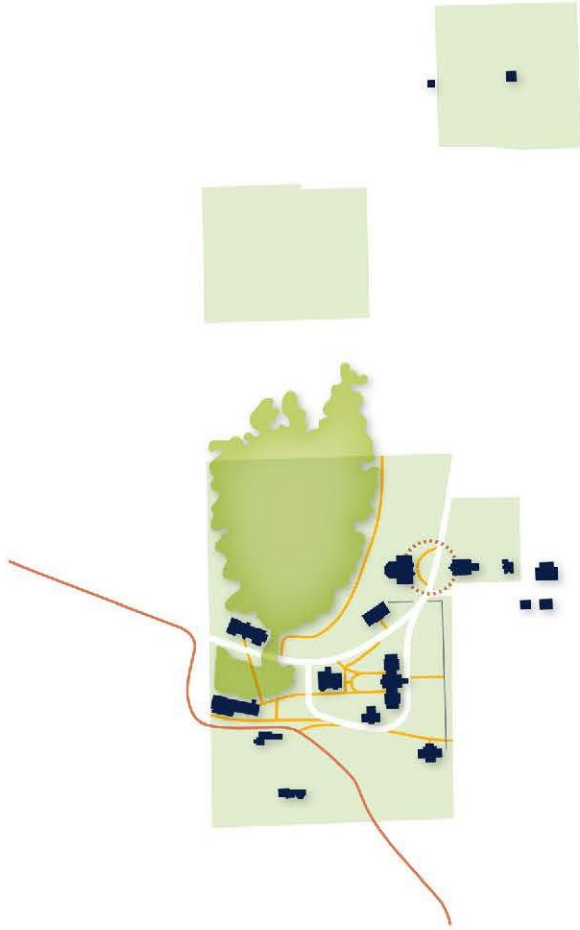


**Health &
Well Being**



**Research &
Discovery**

Legacy of Campus History



1856-1901
The Campus on the Hill



1902-1928
The Boulevard Campus



1929-1957
The Comprehensive State University



This sustainable framework will provide KU the path for the cultural transformation needed to realize the Jayhawk Rising vision.